

## 3DO RGB Kit Installation Guide

We made this tutorial to help you to install this kit. You don't have to follow it literally, especially if you are not a beginner in electronics...

**We won't be held responsible in case of bad experiment**

### A few advices before beginning :

- Choose an adapted place, with space !
- Take your time
- Use adapted tools, not a too powerful soldering iron with a big soldering tip. And if you're not used to soldering, train on a non working motherboard
- Don't hesitate to test each soldered joint with a multimeter

### Required equipment :

- a cross-shaped screwdriver
- desoldering braid
- soldering iron, wiring cable...

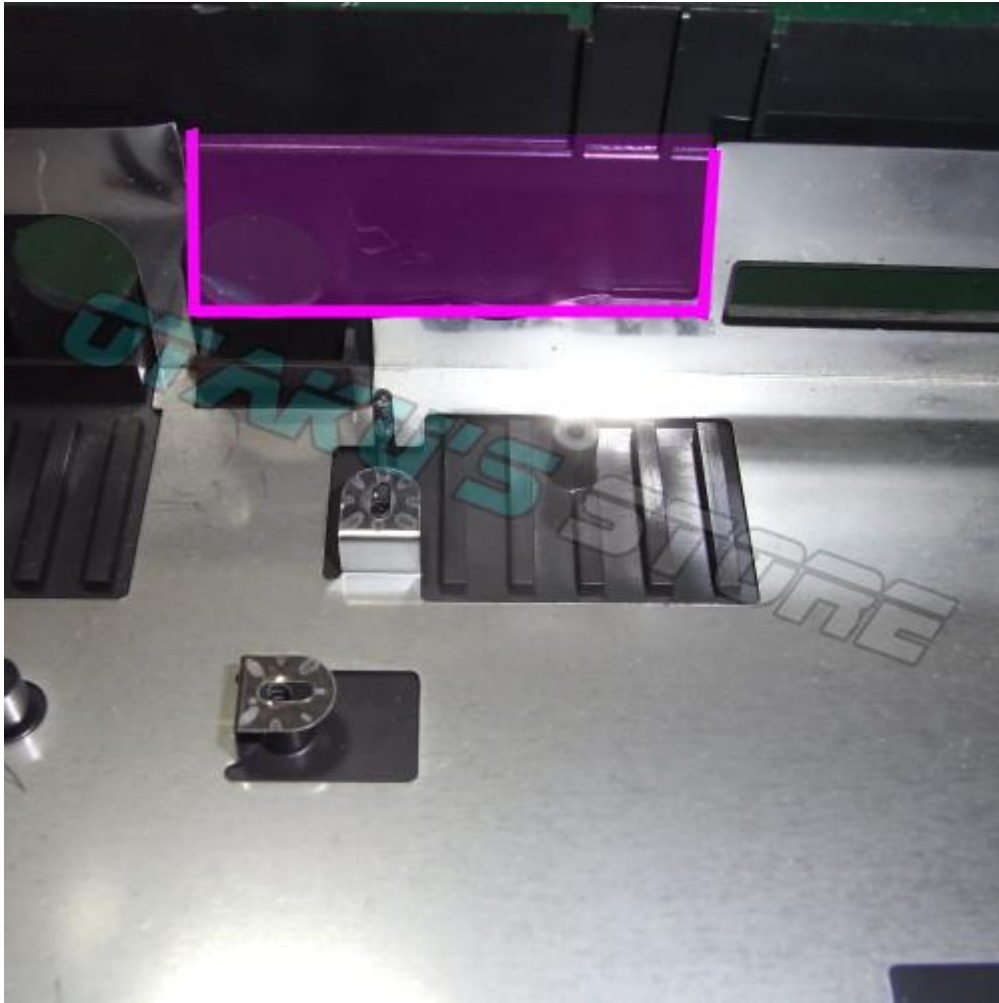
The majority of this equipment can be bought in the « Tools » section

### 1. Installation on 3DO FZ-1 :



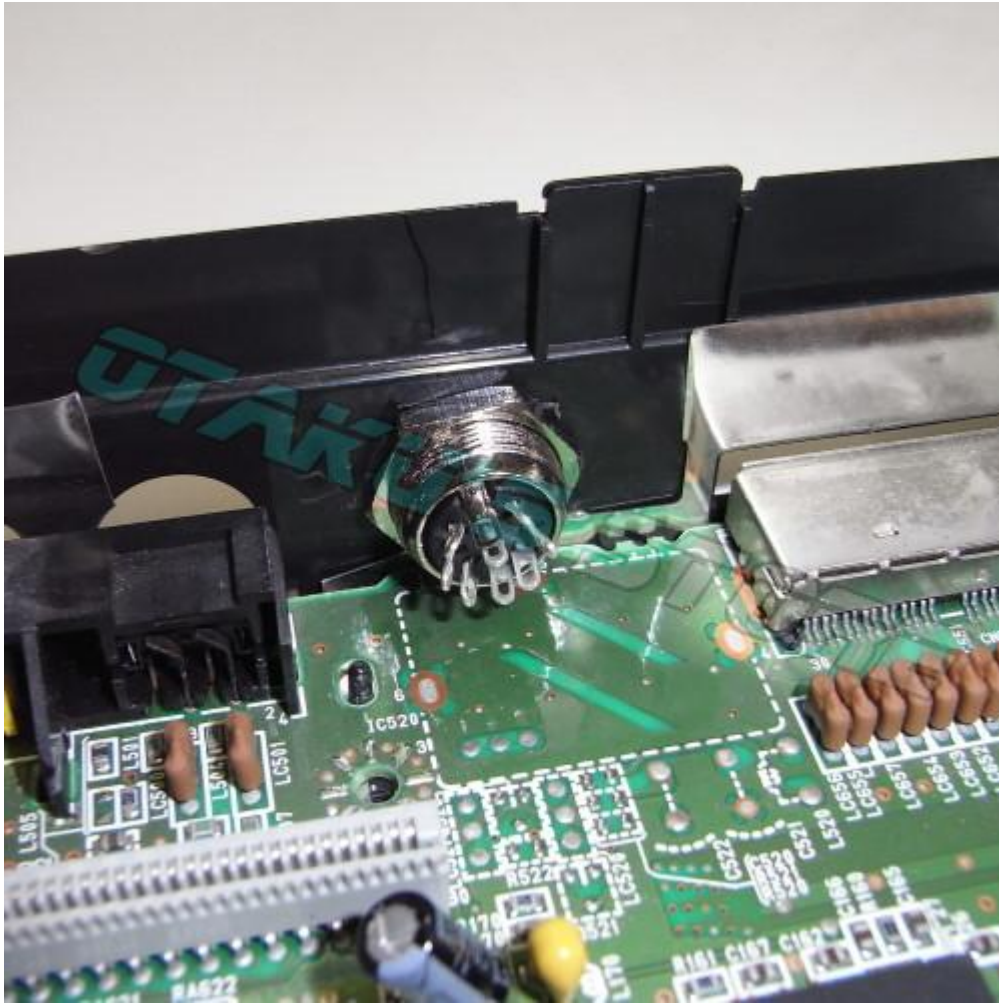
To begin, open the console to access to the motherboard (remove the laser player and the shieldings)

Installation of the DIN8 connector : remove the motherboard from the console. To install the video connector, you have to create a hole in the lower shielding (you can do it with big scissors)



Drill a 16mm hole diameter





NOTE : some versions of the 3DO FZ-1 have got a RF modulator. You have to desolder it, because you'll have to install the new connector at its location

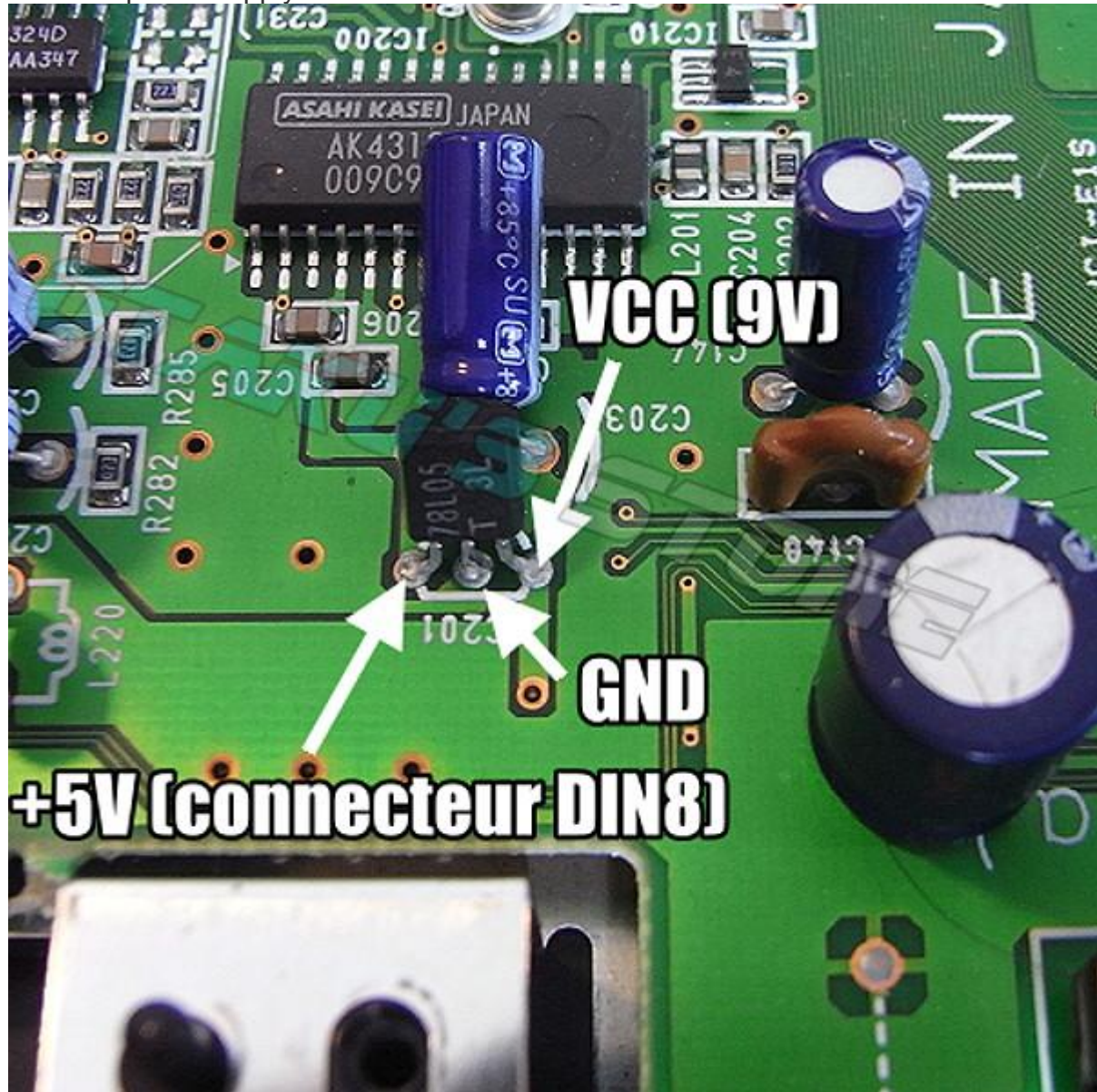


Wiring of the kit : place the kit as on the picture below (one face is self adhesive). This location is logical, because it offers an access to the potentiometer of image adjusting (a hole is already present in the body of the console)



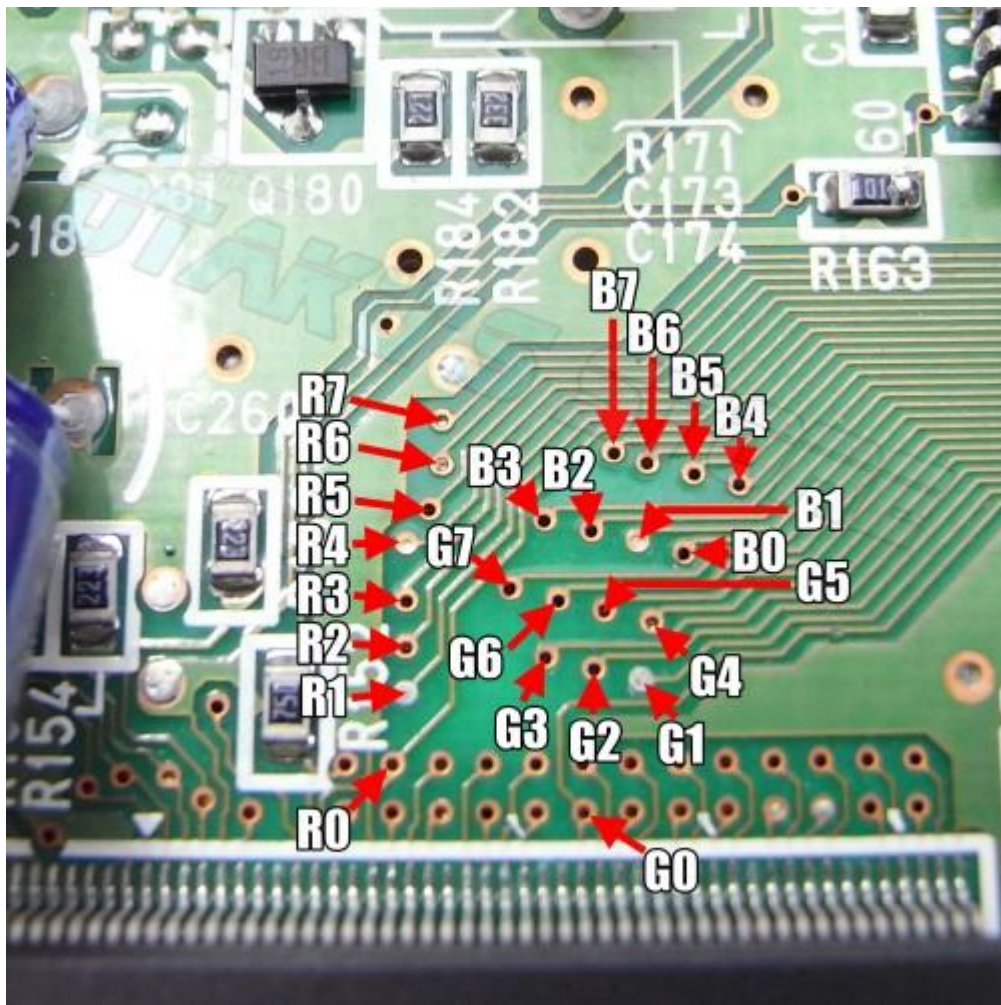


Points of power supply of the kit



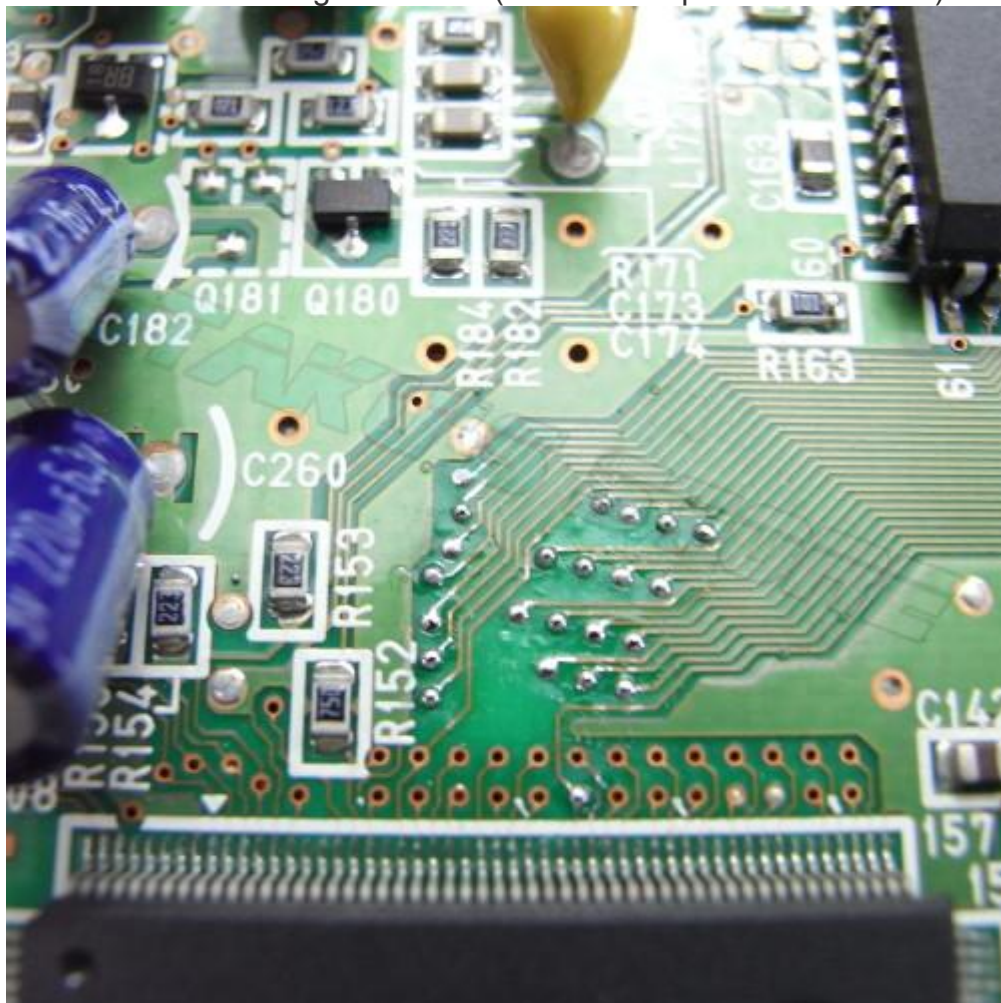
- VCC (+9V) & GND => Board PSU
- +5V & VCC => DIN8 connector

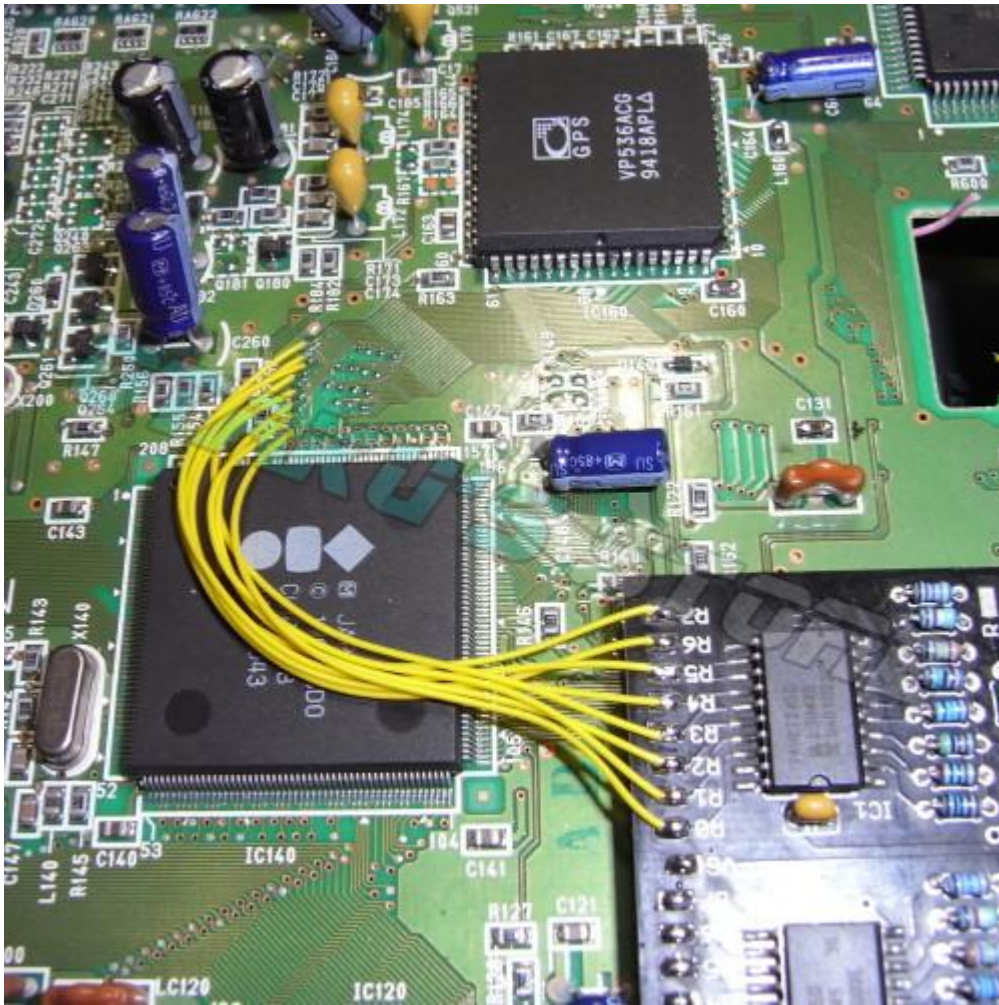
The points R0...7, G0...7 and B0...7 :



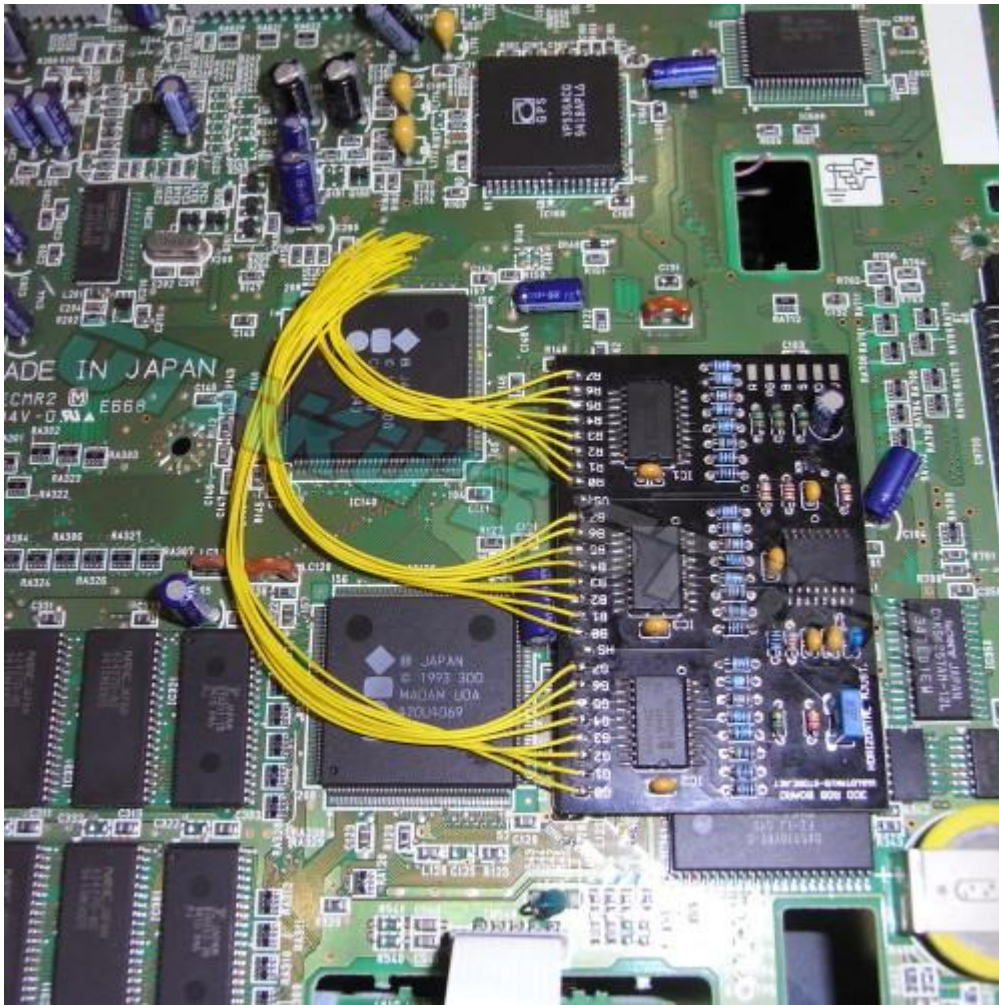


Scrub slightly the polish on the circuit at the level of the points to solder and tin them, otherwise the soldering won't hold (idem for the points VS and HS).

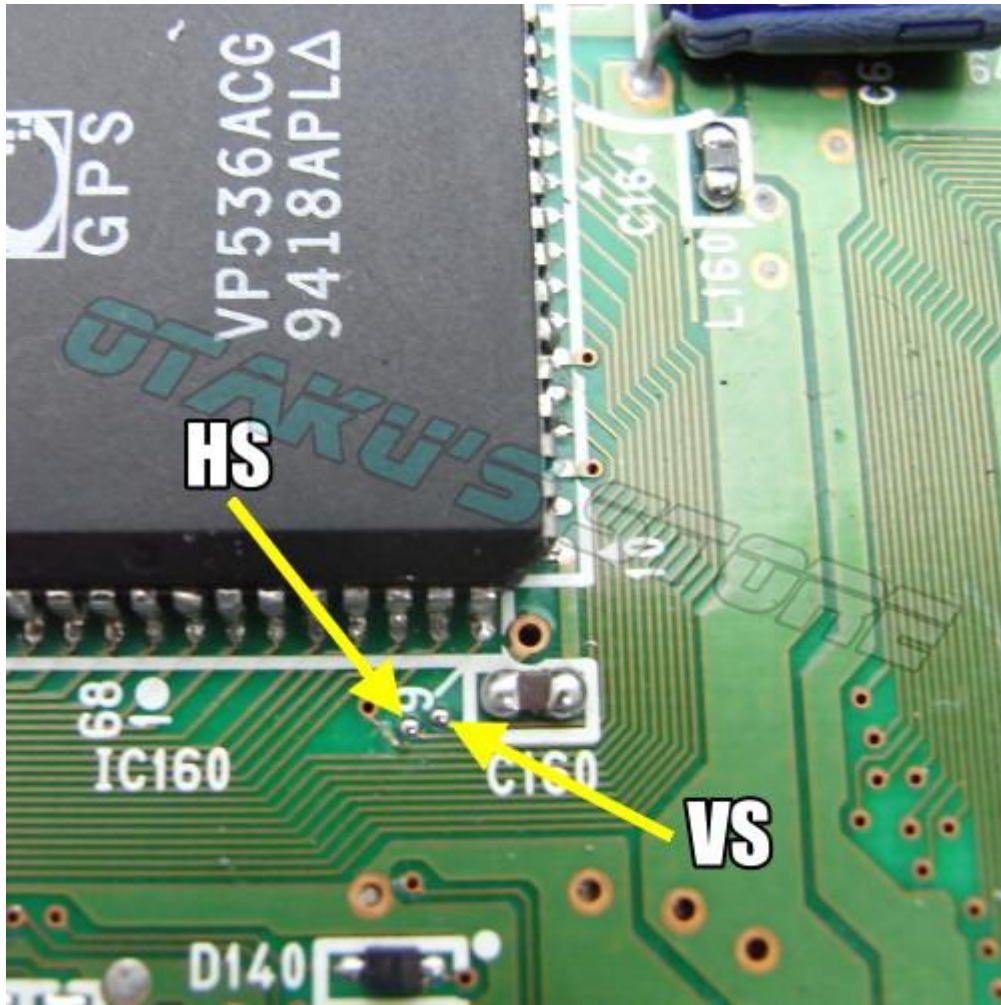






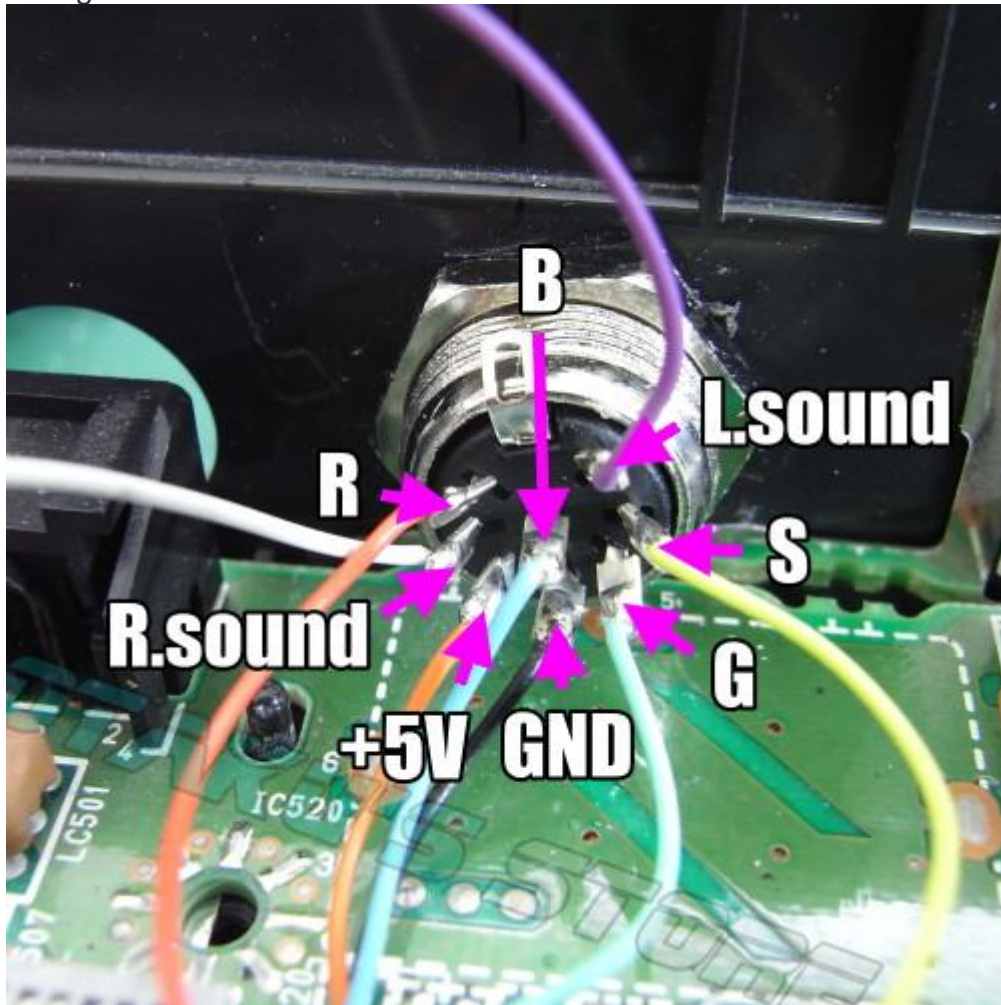


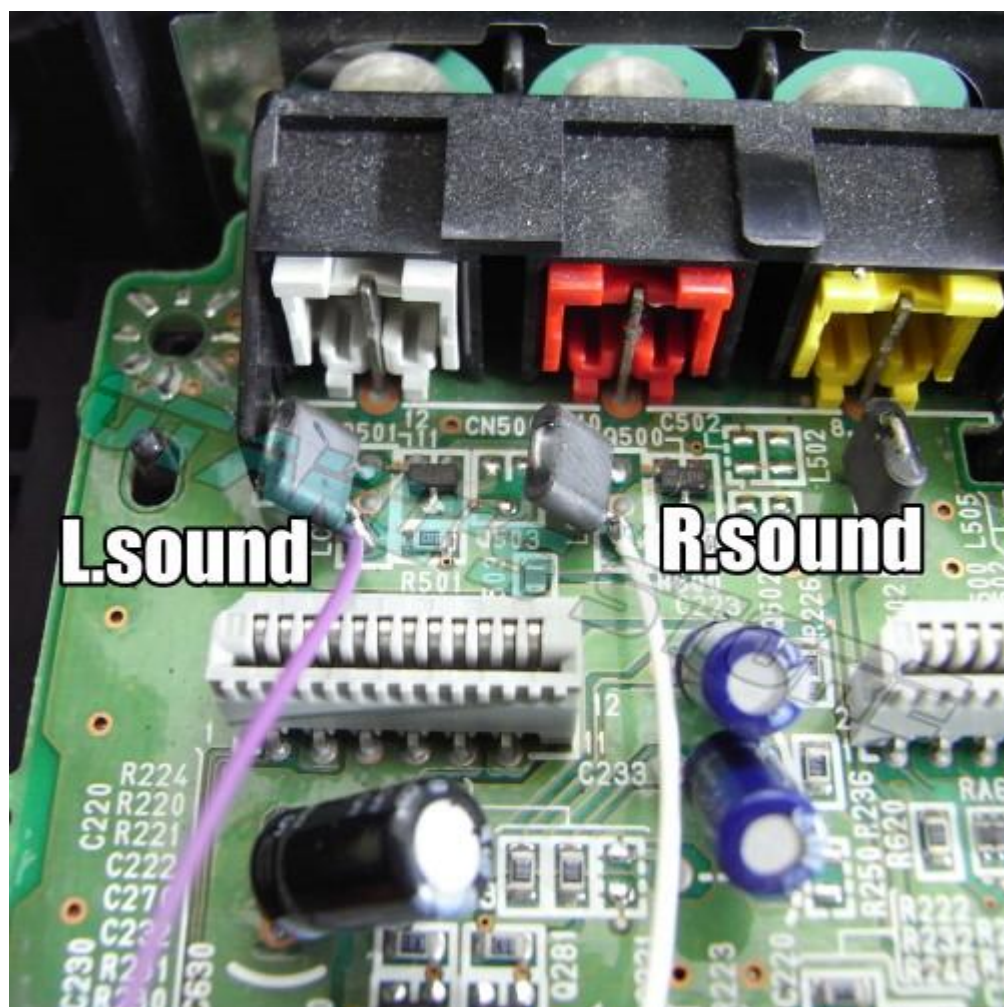
Points VS and HS

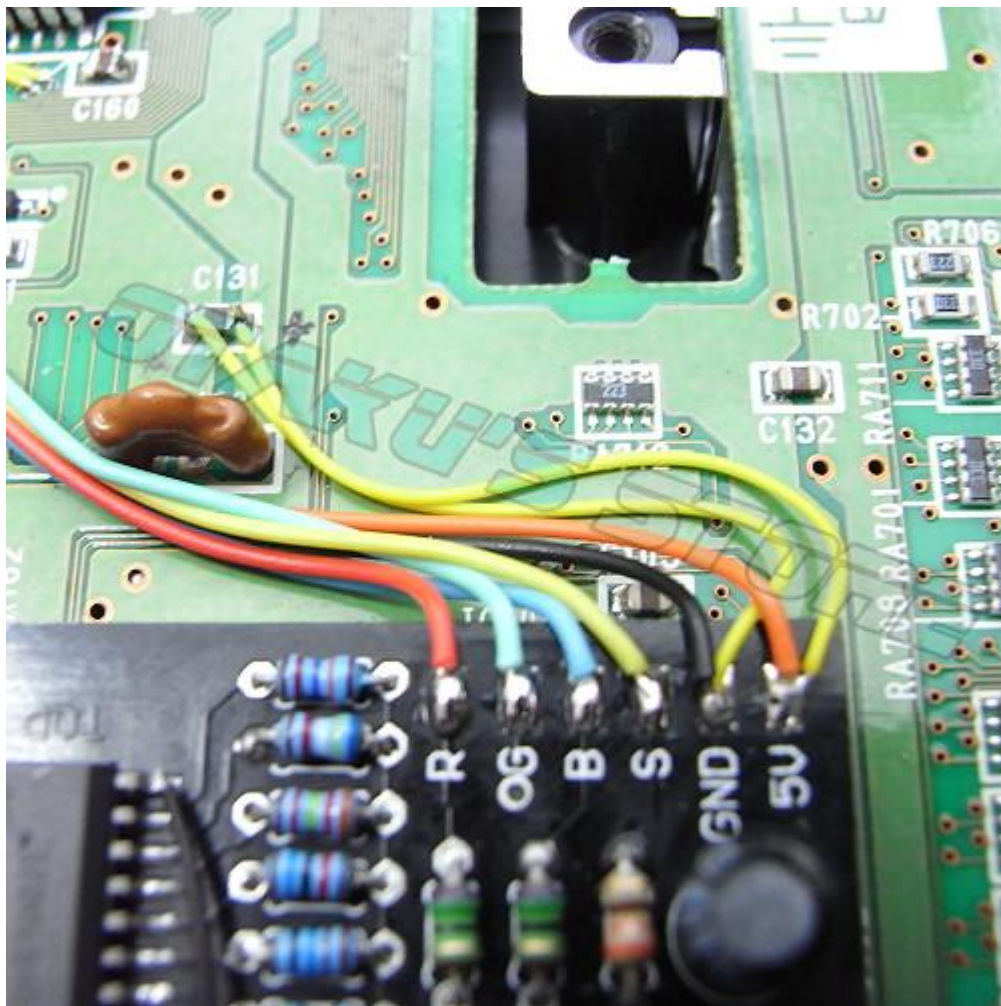




Wiring of the video connector







Now you only have to put the console back together, **be careful don't put back these two pieces of the shielding :**









Before re-assembling the console, check that the shielding of the laser player doesn't touch the soldered joints of the video connector :



If the image is bad quality or not centered, play adjust the potentiometer ! It's over

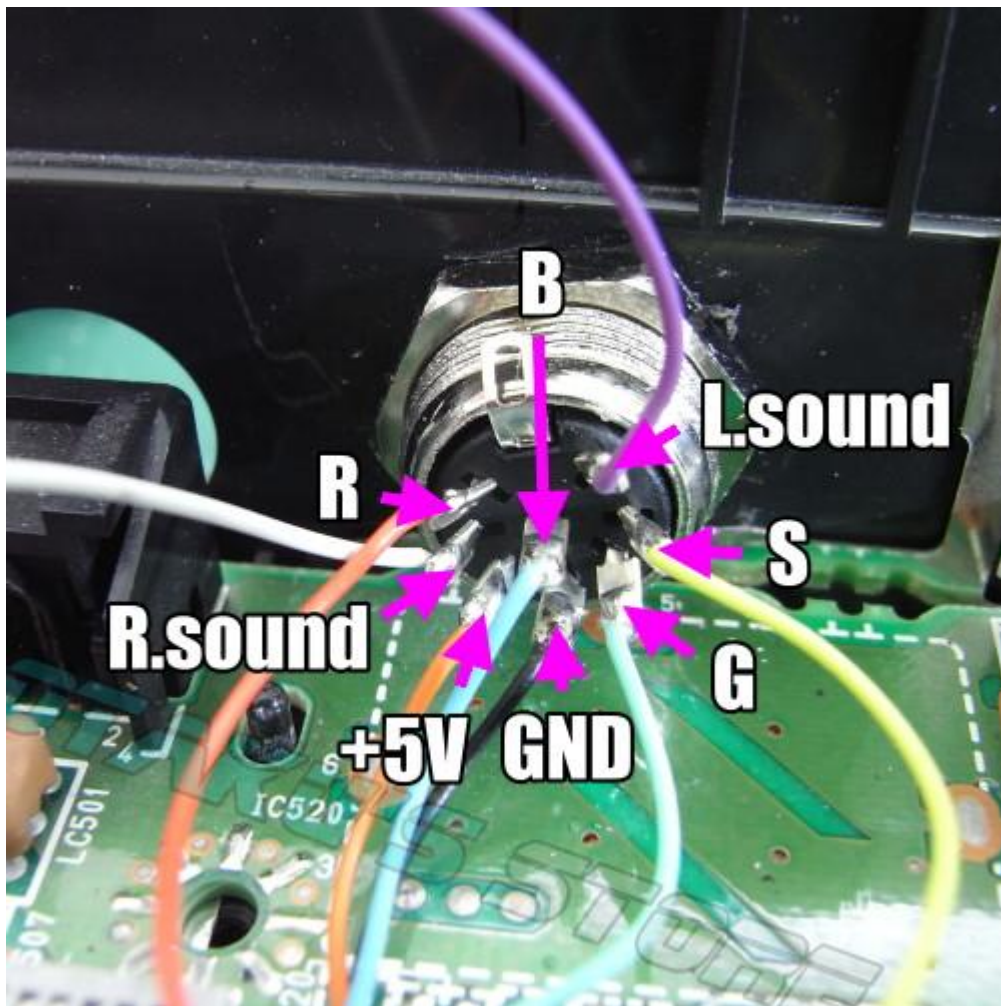
## **2. Installation on a FZ-10 Panasonic 3DO** **DIN8 connector installation :**

Drill diameter = 16mm

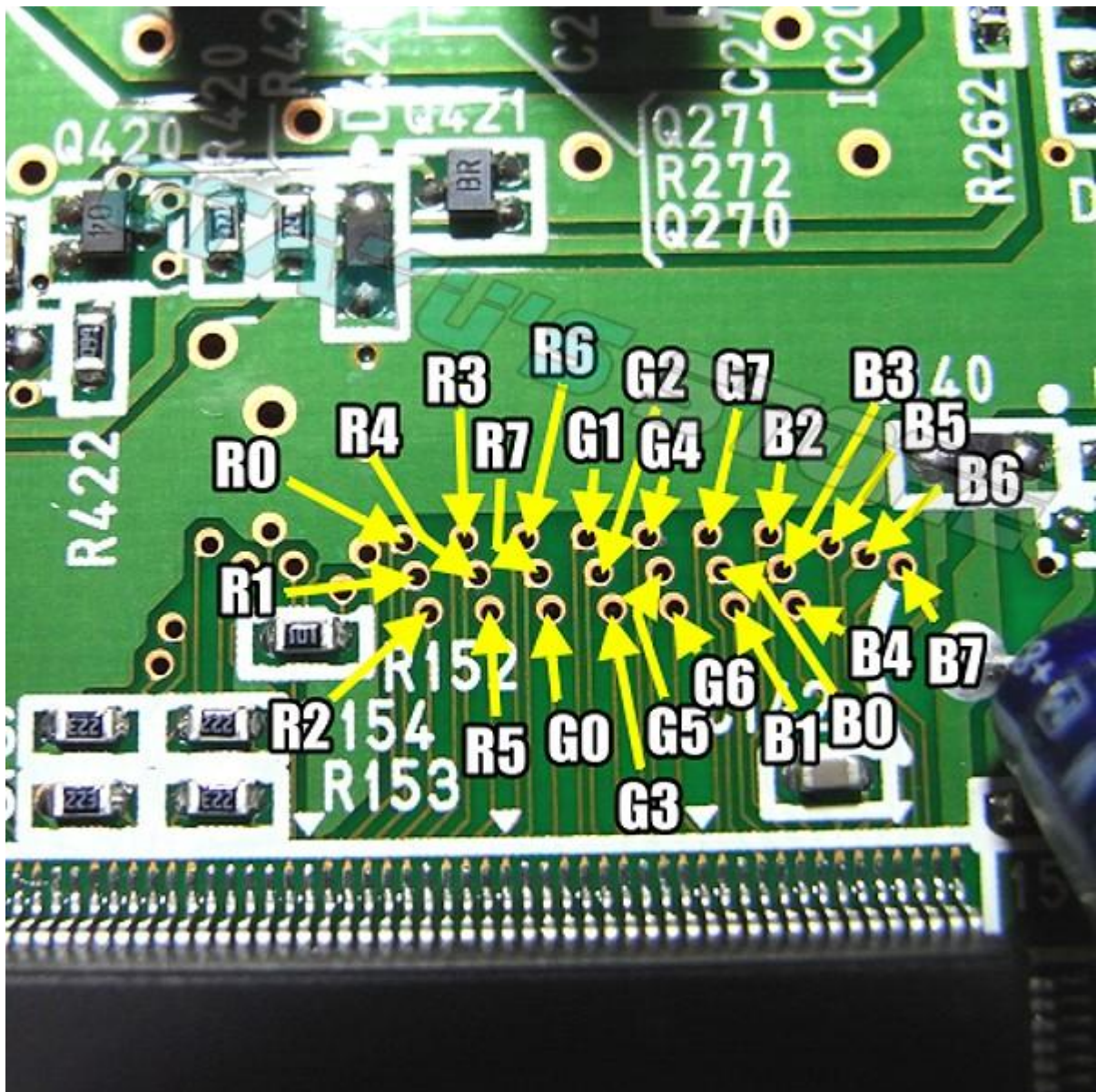


DIN 8 connector pinout, solder side :



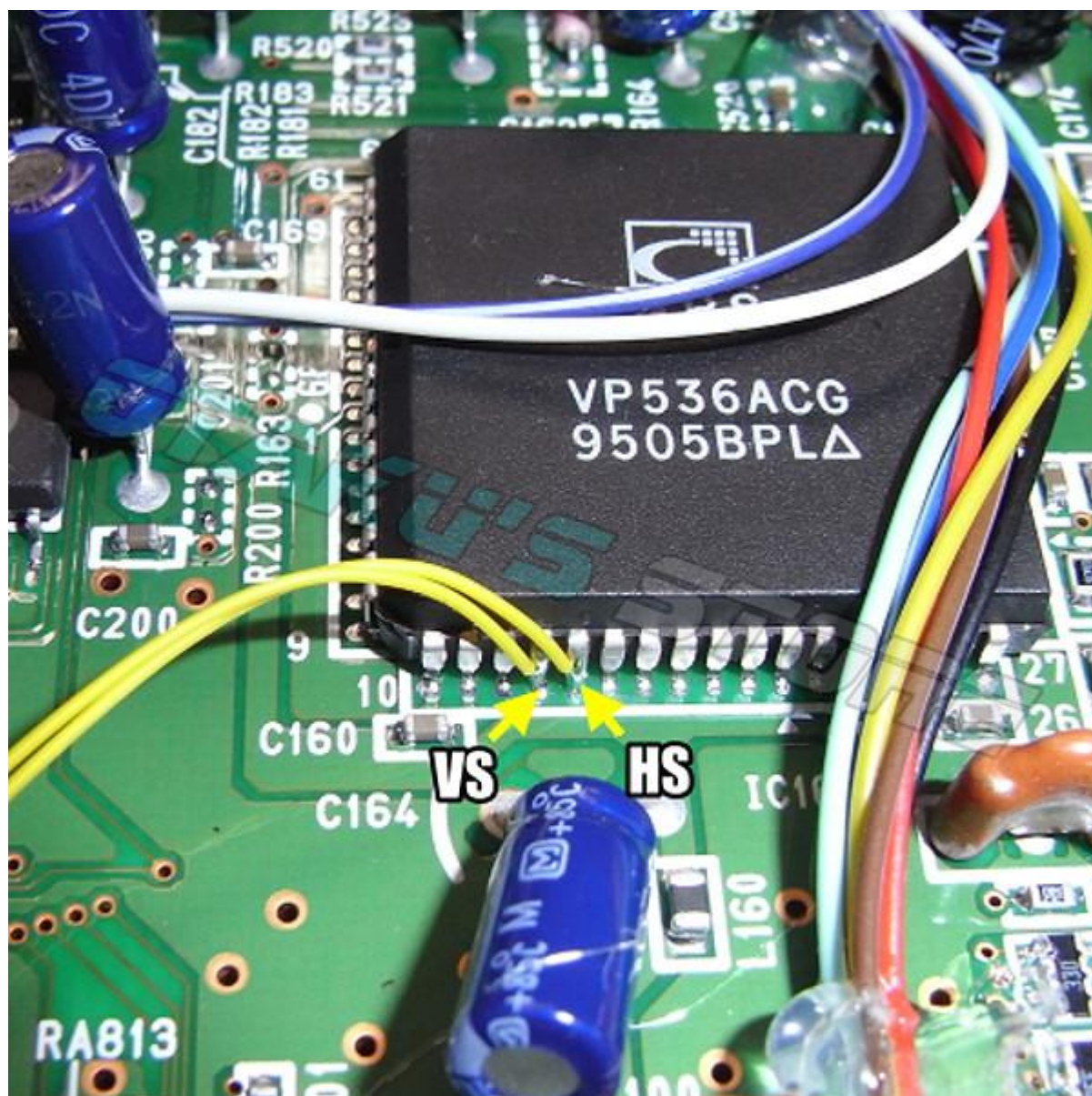


Points R0...7, G0...G7 and B0...B7 :

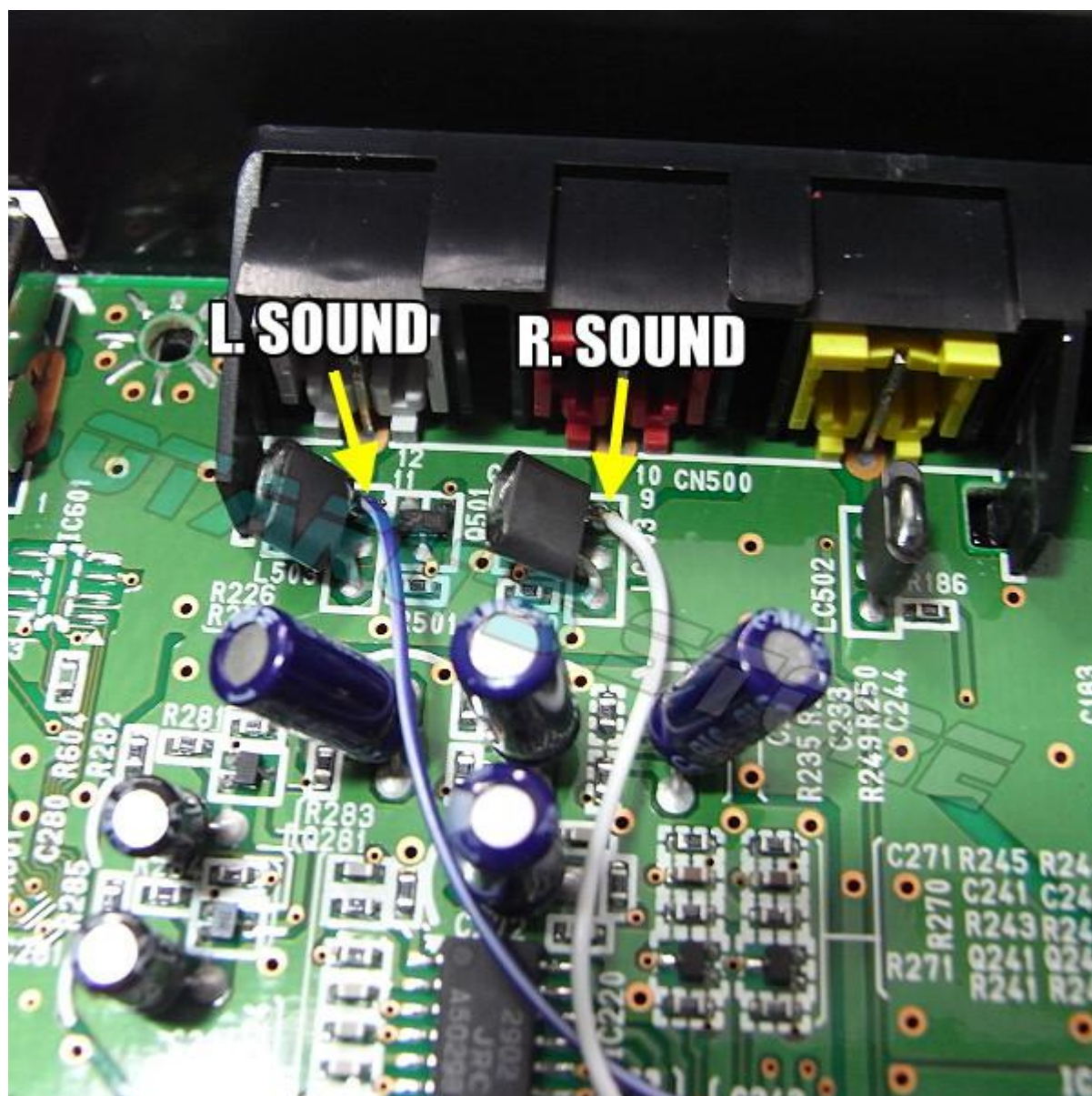


Points VS and HS :





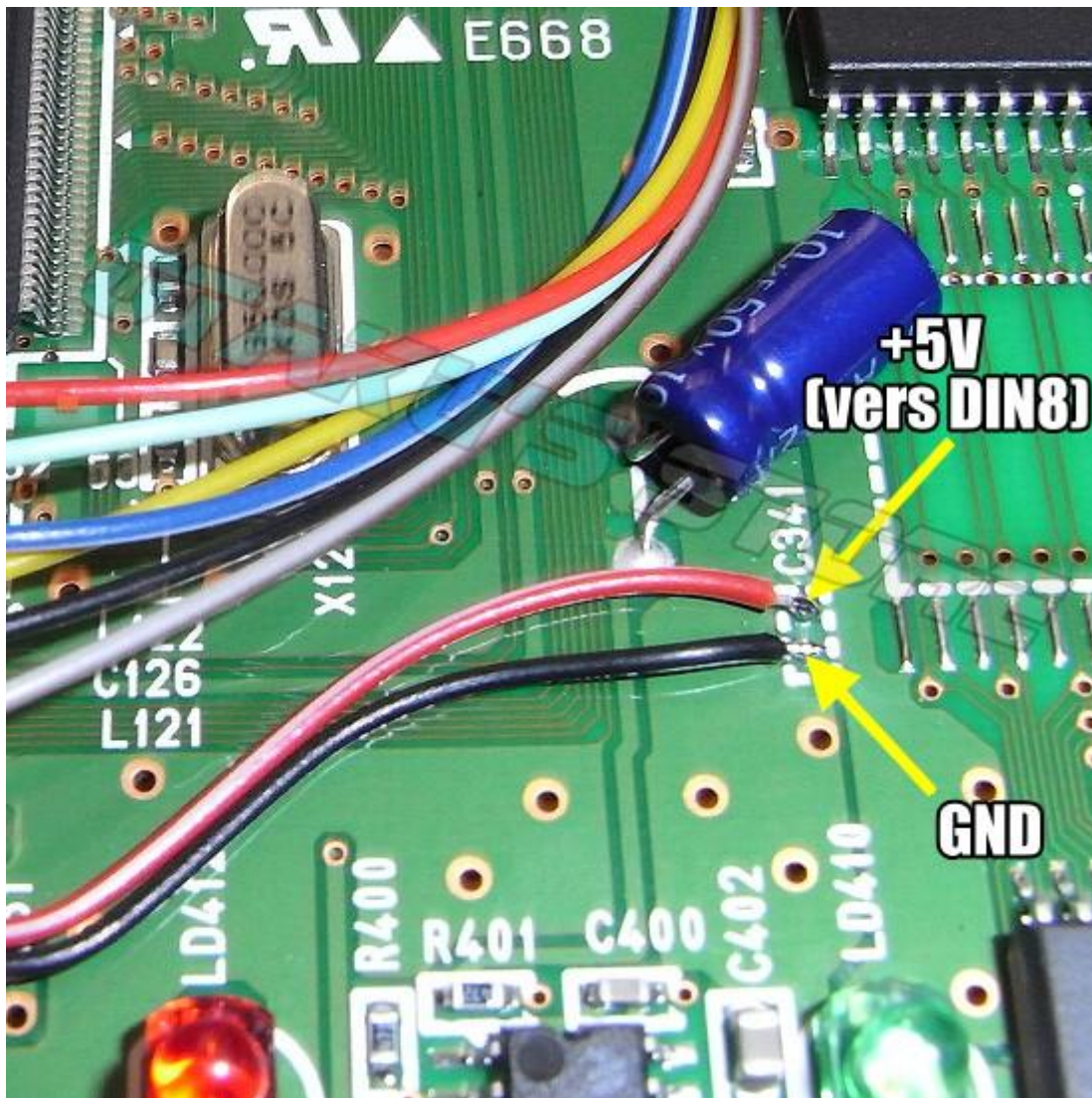
Points L.sound et R.sound :



**Power supply voltages / points:**



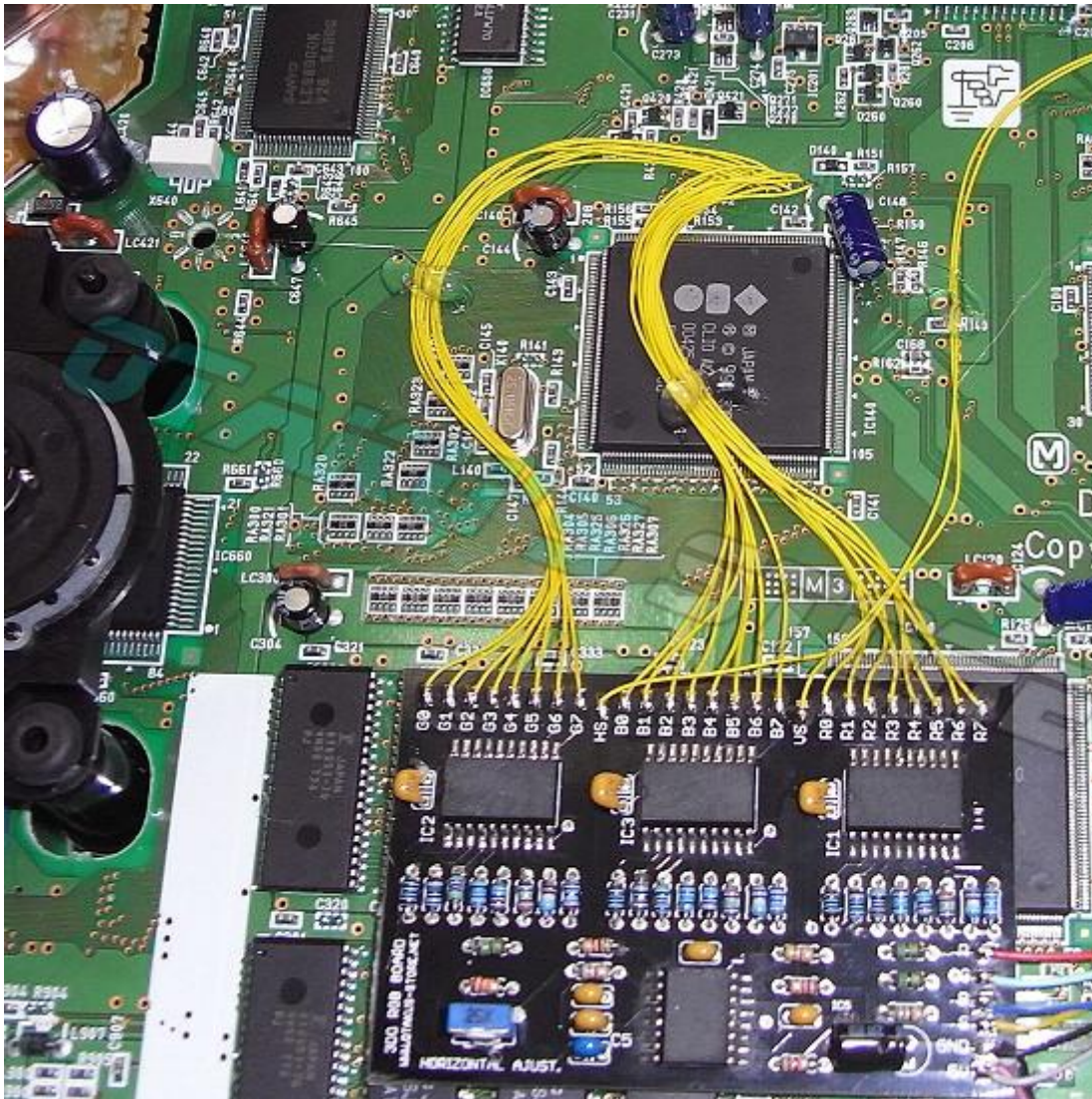




+5V & GND => DIN 8 connector

Example of board Location :





It's done, before re-assembling the top part of the console, adjust the horizontal image centering!